

JBC

www.jbctools.com

INSTRUCTION MANUAL



Soldering Unit

Ref. HA245A-5B / HA470A-5B

Packing List

Either TRA245 or TRA470 are included.

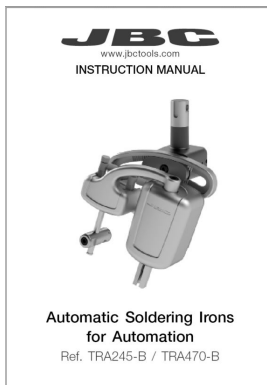
**Soldering Iron
for Automation** 1 unit

Ref. TRA245-B: *Works with R245 cartridges*

Ref. TRA470-B: *Works with R470 cartridges*



Manual 1 unit
Ref. 0024884

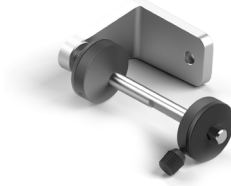


The following items are included in SFR-A box:

Solder Feeder for Automation 1 unit
Ref. SFR-A



Reel Support 1 unit
Ref. 0024561



Communications Cable 3 m..... 1 unit
Ref. 0024563



Allen Key 1,5 mm 1 unit
Ref. 0741610



Allen Key 2,5 mm 1 unit
Ref. 0012574



Allen Key 3 mm 1 unit
Ref. 0013609



Screws DIN 912 M4x65..... 2 units
Ref. 0024552



Screws DIN 912 M4x20..... 2 units
Ref. 0921890



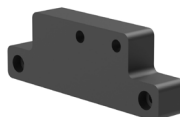
Screws DIN 7991 M4x10..... 1 unit
Ref. 0490180



Spanner 10 mm..... 1 unit
Ref. 0017631



Insulator 1 unit
Ref. 0024588



Manual 1 unit
Ref. 0024557



The following items are included in UCR245-5A/UCR470-5A box:

Control Box for Automation 1 unit
Ref. UCR245-5A
UCR470-5A



Power Cord 1.5m 1 unit
Ref. 0009401



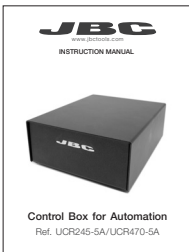
Tool Cable 3m 1 unit
Ref. 0021403



Communications Cable 3m 1 unit
Ref. 0020261

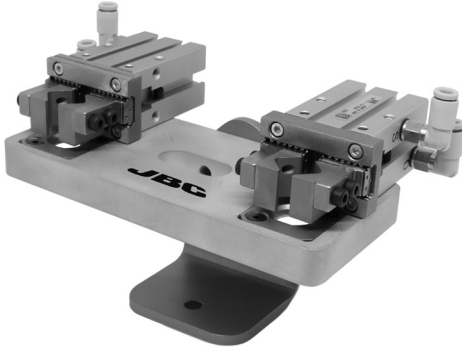


Manual 1 unit
Ref. 0021384



The following items are included in CS2R245-A/CS2R470-A box:

Cartridge Stand for Automation 1 unit
Ref. CS2R245-A
CS2R470-A

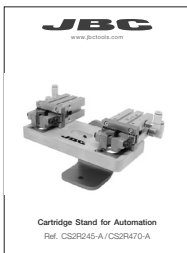


Washer 1 unit
DIN 125 Ø6.4 mm
Ref. 0842925

Screw 1 unit
DIN 912 M6x20
Ref. 0842925



Manual 1 unit
Ref. 0021526



The following items should be included in CLMR-A box:

Tip Cleaner for Automation 1 unit
Ref. CLMR-A



Metal Brushes 1 unit
Ref. CLMU-A8
(2 brushes)



Connector Cable (3m)..... 1 unit
Ref. 0020261



Manual 1 unit
Ref. 0020354



Specifications

UCR245-5A 85 - 265V 50/60Hz. Input fuse:	2A. Output: 22V.
UCR470-5A 85 - 265V 50/60Hz. Input fuse:	4A. Output: 42V.
- Net Weight:	2.20 kg (4.9 lb)
- Dimensions:	210 x 162 x 75 mm (8.3 x 6.4 x 3.0 in)
- Output Peak Power (on UCR245-5A):	160W
- Output Peak Power (on UCR470-5A):	250W
- Temperature Range:	90 - 500 °C (190 - 932 °F)
- Idle Temp. Stability (still air):	±1.5 °C / ±3 °F
- Tip to ground resistance:	< 2 ohms
- Tip to ground voltage:	< 2mV RMS
- Ambient operating temp:	10 - 40 °C (50 - 104 °F)
- Connections:	Communications: M8-5pins Tool: M16-8pins
TRA245-A	
- Net Weight:	715 g (1,575 lb)
- Dimensions:	132x 187x 110 mm (5,21x 7,38x 4,35 in)
- Operating pressure	1,5 to 7 bar / 20 to 100 psi
TRA470-A	
- Net Weight:	720 g (1,587lb)
- Dimensions:	132x 190x 110 mm (5,21x 7,48x 4,35 in)
- Operating pressure	1,5 to 7 bar / 20 to 100 psi
SFR-A	
- Net Weight:	948 gr (2.09lb)
- Total Weight:	1246gr (2.4lb)
- Dimensions:	114 x 66 x 52 mm (4.49 x 2.60 x 2.05 in)
- Power Supply input:	24Vdc (±5%). 1.5 A current required
- Spool Capacity:	Up to 1 kg (2.20 lb)
- Solder Wire Reel Dimensions:	Max. lenght 80mm (3.2 in), Max.diam. 80mm(3.2 in)
- Max. Speed:	120 mm/s (4.72 in/s)
- Ambient Operating Temp.:	10 - 50 °C (50 - 122 °F)
- Connections:	M8-5 pin Communcation Connector
CS2R245-A or CS2R470-A	
- Net Weight:	690 g (1.51lb)
- Dimensions:	153 x 82 x 97 mm (6.02 x 3.23 x 3.82 in)
CLMR-A	
- Net Weight:	2,7 kg (5.9 lb)
- Dimensions:	137 x 153 x 110 mm (5.4 x 6.0 x 4.3 in)
- Brush diameter:	50 mm (2.0 in)

Complies with CE Standards.

ESD safe.

JBC

Warranty

JBC's 2 year warranty covers this equipment against all manufacturing defects, including the replacement of defective parts and labour.

Warranty does not cover product wear or misuse.

In order for the warranty to be valid, equipment must be returned, postage paid, to the dealer where it was purchased.



This product should not be thrown in the garbage.

In accordance with the European directive 2012/19/EU, electronic equipment at the end of its life must be collected and returned to an authorized recycling facility.



www.jbctools.com